

# MONTHLY MEMBERSHIP PROGRESS REPORT

District 201Q1

Results as of: 5/31/2020

GMT:

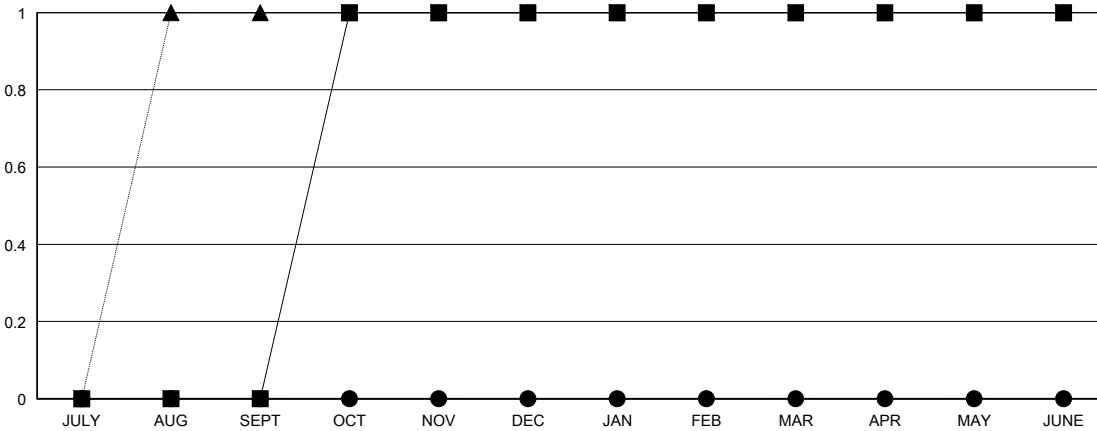
LOCATION AUSTRALIA

GMT CA

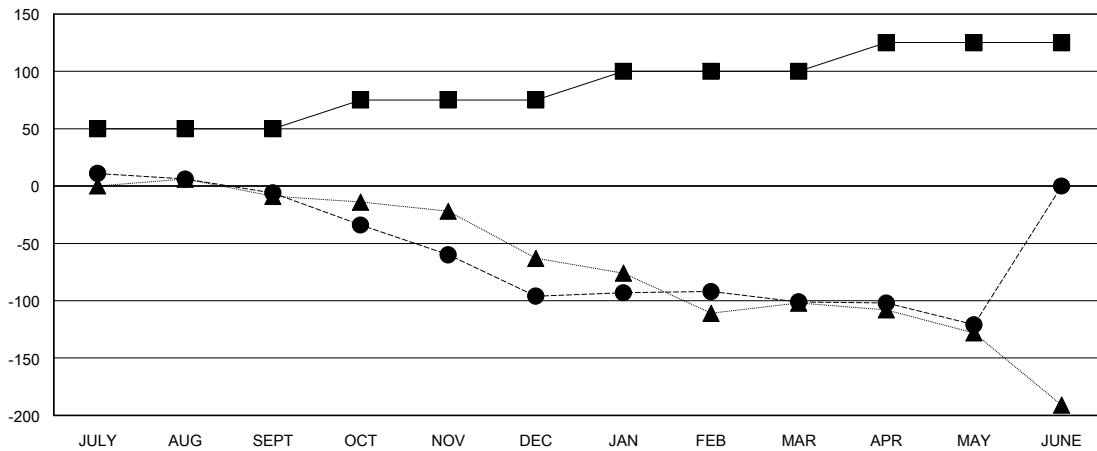
| Clubs                 |               |           |               |
|-----------------------|---------------|-----------|---------------|
| RESULTS FOR 2019-2020 |               |           |               |
| QUARTER               | NEW CLUB GOAL | NEW CLUBS | DROPPED CLUBS |
| JULY/AUG/SEPT         | 0             | 0         | 1             |
| OCT/NOV/DEC           | 1             | 0         | 2             |
| JAN/FEB/MAR           | 0             | 0         | 0             |
| APR/MAY/JUNE          | 0             | 0         | 1             |

| Members               |                        |                      |  |
|-----------------------|------------------------|----------------------|--|
| RESULTS FOR 2019-2020 |                        |                      |  |
| QUARTER               | MEMBER GROWTH NET GOAL | MEMBER GROWTH ACTUAL | DROPPED MEMBERS ACTUAL (including transfers) |
| JULY/AUG/SEPT         | 50                     | 57                   | 54   |
| OCT/NOV/DEC           | 25                     | 35                   | 115  |
| JAN/FEB/MAR           | 25                     | 51                   | 51   |
| APR/MAY/JUNE          | 25                     | 12                   | 31   |

GOALS AND ACTUAL NEW CLUBS CUMULATIVE



GOALS AND ACTUAL MEMBERS CUMULATIVE



|   |   |  |
|---|---|--|
| DROPPED CLUBS: 4  | 45 CLUBS OF 82 ADDED 1 OR MORE NEW MEMBERS                | <b>GENDER DISTRIBUTION</b><br>MALE 981 (59.93%)<br>FEMALE 656 (40.07%) |
| <b>DROPPED MEMBERS</b><br>DECEASED 19<br>CLUB CANCELLED 0<br>OTHER 232<br>TOTAL 251 | <a href="#">CLICK HERE FOR CUMULATIVE MEMBERSHIP DATA</a> | TOTAL FAMILY UNIT MEMBERS 320<br>FAMILY MEMBERS PAYING HALF DUES 163   |